



IMS Map360

by

Leica
Geosystems

IMS Map360, part of the **Leica Geosystems Incident Mapping Suite**, provides public safety professionals with an easy way to go from field-to-finish output in 2D or 3D, from a wide range of geospatial equipment.

Support for all of your Measuring Tools and Methods

Flexibility and multi-sensor support makes Map360 both productive and scalable to your agency's needs as they change and grow. Starting with manual scene measurement entry, all the way up to advanced mobile mapping systems (and everything in between!), Map360 provides a common user experience for a wide range of sensors, including support for total stations, laser scanning, GNSS, Leica MultiStations, Unmanned Aircraft Systems, and Pegasus mobile scanning solutions.

Easy Scene-To-Map Productivity

Turn your data into a diagram with ease by using scene mapping software such as Evidence Recorder or Leica Captivate. With Map360, the map you create at the scene can be turned into a ready-to-print finished diagram in minutes.

The Power of CAD, Simplified

IMS Map360 is the most precise desktop forensic mapping software available in the world and is the only solution that has an industry leading 3D CAD system built-in. The underlying precision of our engineering-grade CAD engine provides you with a solid foundation to your work that is precise, compelling, and irrefutable.

Simple Sketch or Advanced Mode, You Decide!

Sometimes you just need to generate a simple 2D scene diagram in a hurry. Our easy-to-use sketch mode is perfect for that. Should your project have more demanding needs, you can switch to advanced mode to give yourself access to the tools you need, when you need them.

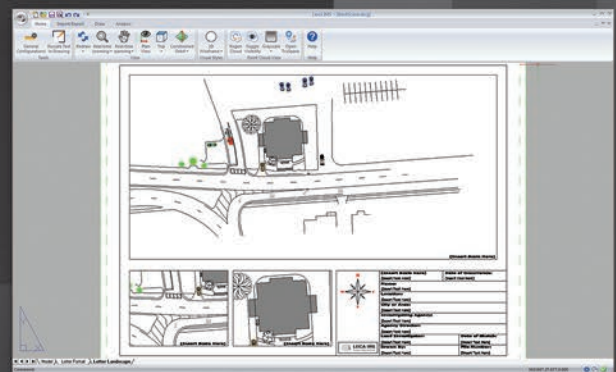
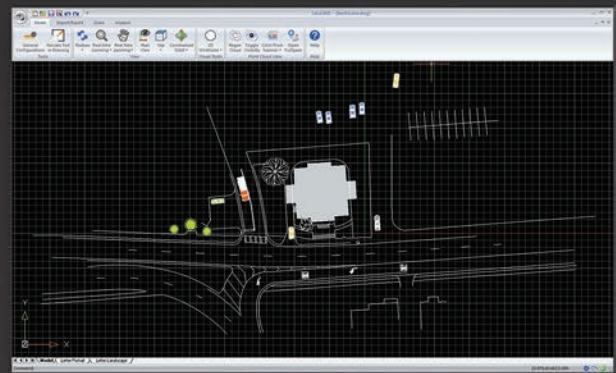
Wizard for Creating Finished Diagrams

Interactive templates allow you to easily visualize your printed diagram before you print compelling documents.



Leica Geosystems
Incident Mapping Suite

IMS Map360 is part of the Leica Geosystems Incident Mapping Suite

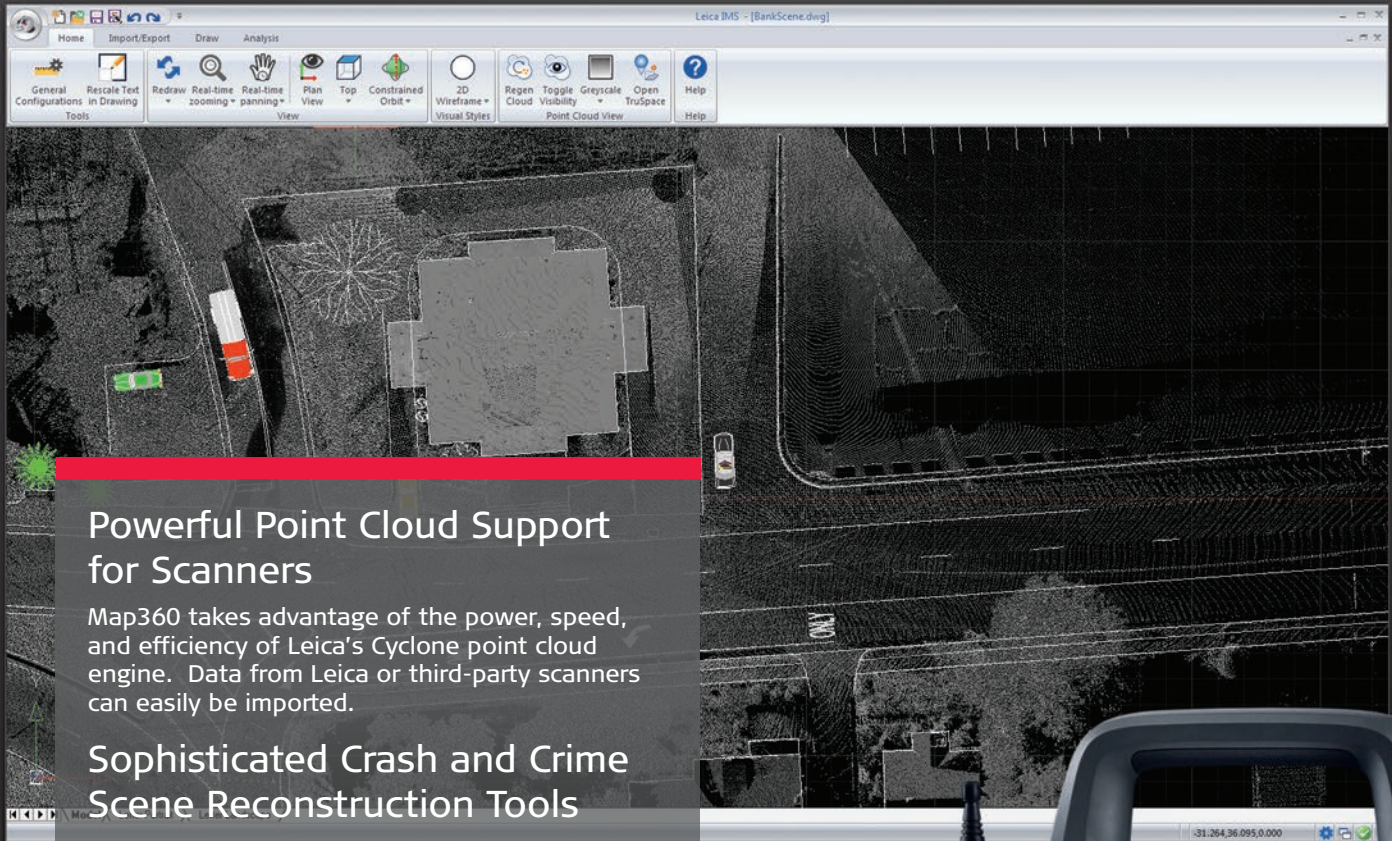


Orthorectified Aerial Imagery from the Hexagon Imagery Program

Incorporate high-accuracy 30 cm (12") resolution airborne imagery directly into your drawing by downloading Hexagon Imagery Program (HxIP) data directly from the cloud.

Witness Viewpoint Analysis

Corroborating or disproving witness statements about what they could or couldn't see during the incident is simple using Witness Viewpoint. Just pick a point, add a viewpoint at a specific height above that, and take a look around for yourself in vivid 3D.



Powerful Point Cloud Support for Scanners

Map360 takes advantage of the power, speed, and efficiency of Leica's Cyclone point cloud engine. Data from Leica or third-party scanners can easily be imported.

Sophisticated Crash and Crime Scene Reconstruction Tools

Calculators are included for a variety of crash reconstruction formulae; speed, deceleration factor, kinetic energy, momentum, kinematics, and more. Also included is a powerful bullet path reconstruction tool that uses a best fit solution to establish accurate trajectories.

Audit Log for Evidence Integrity

The CAD points that make up your diagram are stored in a separate, protected database file for security. Any attempt to change point coordinates will result in a warning. Any changes made are noted in the database and can be examined through audit log reporting.

Cyclone Compatible

Databases created with Cyclone modules like Register, Publisher, Importer and JetStream can be opened directly with Map360. No conversions are necessary.

SketchUp Model Import

Automatically import 3D models from the millions available at 3D Warehouse.

Symbol Library

Draw upon an extensive library of over 7,000 common crash and crime scene symbols to illustrate your diagrams.



Pictured: The new Leica ScanStation PS40

For more information, visit:

ims.leica-geosystems.com

- when it has to be **right**

Leica
Geosystems